

Qualitative Analysis and Cost Benefit Modelling of Dementia Services

**George McNamara
Alzheimer's Society**

Alzheimer's Society



- 3,000 local community based services
- National support services – national helpline, Talking Point, Dementia Connect
- Research
- Influencing campaigns
- Dementia Friends
- Dementia Friendly Communities



Aiming higher for people with dementia



National policy



Regional devolution



New models of care

Cost of dementia to the UK

Dementia costs the UK £26.3 billion a year

That's enough to pay the annual energy bill of every household in the country.



Growing demand vs austerity

- There will be over 1 million people in the UK with dementia by 2021
- Right to post-diagnosis support
- Equality with other conditions



- The NHS budget increase is equivalent to an average annual increase of just 0.9%
- Local authorities have already reduced expenditure on adult social care by £4.6 billion since 2010
- Local authorities will see an overall cut to their budgets of around 55% by 2020
- Increase in self funders



Evidence of what works and value for money is more important than ever

Diagnosis and post-diagnosis support - what works

Analysis of 8 dementia projects across England

Key aspects of good diagnosis

- Timeliness
- Precision
- Information
- Clarity of diagnosis
- Information and signposting
- Empowerment, and instilling a belief from the start that 'life doesn't end when dementia begins'

Key aspects of good post-diagnosis support

- Positivity
- Involving carers
- Proactive offers of support
- Clear system of access to support
- Case management
- Single point of contact

Reference ESRO, What good looks like: diagnosis and post-diagnosis support, 2015

Diagnosis and post-diagnosis support - what works

Case study: Merton, south London

- Dementia Hub
- Memory clinic based at Hub
- Dementia Adviser on hand
- Run as a partnership

'For those attending the memory clinic, going through assessment also serves as an introduction to the Hub and the different support on offer.'

Case study: Lancashire

'Lancashire provides a systematic and coherent post-diagnostic support pathway, bringing together a range of clinical and social support services'

- Holistic pathway of support
- Flexibility and tailored to individual needs
- Clear pathway, continued offer of support
- Underpinned by community action

Pathway of Post Diagnostic Support Services - Alzheimer's Society Central Lancashire

Systematic service offer of Dementia Adviser referral through Memory Assessment Service for all people receiving a diagnosis of dementia in Central Lancashire

Open referral routes e.g. Worried about memory, Self referral (individual with diagnosis or family/friend), GPs, Statutory and Voluntary, Community and Faith Sector organisations, etc

One to One Support throughout the journey

Dementia Adviser Service timely information and signposting for the Person living with dementia and their family. **Dementia Support Service** information and individualised support to carers.

Group and Peer Support

Facilitated yet informal opportunities for People living with dementia and carers to meet new friends and share experience in relaxed, friendly, stimulating environments.

Access to meaningful activities, interest and activity based groups. A network for people to connect to others with timely information and appropriate support integral to the service offer.

Collaborative working with partner organisations to develop innovative approaches to sustainable peer support networks and technological advances.

Living and Learning

Programmes that offer Carers timely access to awareness, education and understanding to support individuals living well with dementia. Delivered in group settings to promote peer support networks and connections to other elements of this pathway.

Dementia Action Alliance proactive and collaborative working to support dementia Friendly Communities.

	Greater Preston	Chorley and South Ribble	West Lancashire
Dementia Adviser (Greater Preston)	Dementia Adviser (Chorley & South Ribble)	Dementia Adviser (West Lancashire)	
Dementia Support Worker (Greater Preston)	Dementia Support Worker (Chorley and South Ribble)	Dementia Support Worker (West Lancashire)	
Monthly Dementia Cafés Greater Preston Monthly evening Dementia Café (Central Lancashire)	Monthly Dementia Cafés (Chorley, South Ribble) - Chorley, Penwortham	Monthly Dementia Cafés (West Lancs) - Ormskirk, Parbold, Skelmersdale	
Interest and activity based peer support group for the Person living with dementia x2 (Greater Preston)	Interest and activity based peer support group for the Person living with dementia x2 (Chorley and South Ribble)	Interest and activity based peer support group for the Person living with dementia x2 (West Lancashire)	
Singing for the Brain (Greater Preston)	Singing for the Brain (Chorley and South Ribble)	Singing for the Brain (West Lancashire)	
CrISP (Carers Information Support Programme) level 1 & 2 Rolling Programme	CrISP (Carers Information Support Programme) level 1 & 2 Rolling Programme	CrISP (Carers Information Support Programme) level 1 & 2 Rolling Programme	
Dementia Action Alliance Central Lancashire			

Diagnosis and post-diagnosis support – what works

Case study: Chester, Cheshire

- Different healthcare professionals working together delivering joined-up post-diagnostic support in a series of sessions
 - Consultants from the memory clinic
 - Psychiatrists
 - Occupational Therapists
 - Dementia Adviser

‘Together, the four sessions offer a range of advice. Practical advice can be taken away to be digested or taken up later; emotional and peer support is provided alongside learning about the disease, which is intended to offer explanation and clarity.’

Supporting Diagnosis project

- 25 CCGs were supported to improve diagnosis and post-diagnosis support
- Each approach was developed locally, in partnership with the CCG
- A Dementia Adviser increased post-diagnosis support capacity, or an Information Worker helped to raise awareness in the community



Outcomes

- Diagnosis rates in areas involved in the project for six months **improved on average by 6.4%**, compared to an average across all CCGs (over six months) of 3.1%
- A new partnership model of supporting diagnosis has been developed

Cost effectiveness of Dementia Advisers



Dementia Advisers

- Specialist one to one support
- Information and signposting
- Supporting people to live well and maintain independence

New Economics Foundation Consulting

- Social cost benefit analysis
- Bexley and West Lancashire

Cost effectiveness of Dementia Advisers

Key savings

People with dementia

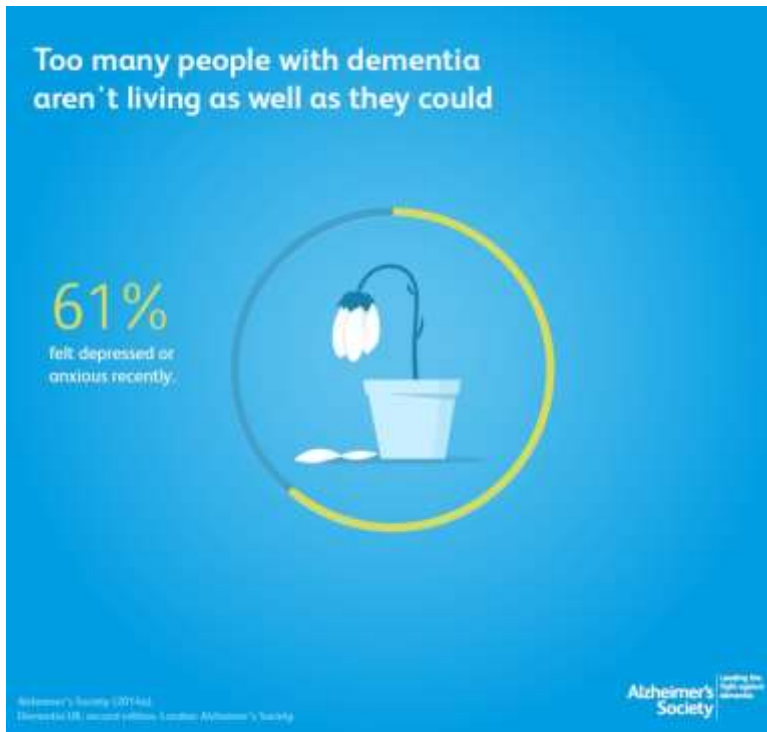
- Building peer networks
- Vitality
- Reduced anxiety

Carers

- Building peer networks
- Knowledge and information
- Reduced anxiety

Savings to the state

- Reduced cost to mental health services through avoided carer breakdown



Person-centred vs generic support

No two people with dementia are the same – services need to reflect the needs of individuals



7 out of 10

people are living with another medical condition or disability as well as dementia.

- Care and support for people with dementia needs to be person-centred
- 70% of people with dementia have co and multi morbidities
- If you get it right for dementia, you benefit the wider population of the elderly

Where next?

- Necessary to show value for money
- Move away from tradition methods of calculating cost effectiveness
- Focus on payment by results e.g. social impact bonds
- Greater involvement of people with dementia

Thank you